

# Starnet Access Flooring

Low-Profile Wire Management System



Manufactured for and Distributed by



**SELECTPREFAB**  
SOLUTIONS



Easy to install, completely adaptable, low-profile wire management flooring system for new construction and renovation to existing office buildings

TV News Station  
Columbus, OH  
5,283 sq. ft. - 2017

# Starnet low-profile flooring unequaled adaptability and access

ASM Modular Systems, Inc. is one of the largest access floor companies in North America, specializing in the data center and office market. As a wholly owned subsidiary of the Kingspan Group, ASM offers distribution and installation capabilities around the globe. Renown for experience, quality and engineering, ASM has become the product of choice for many data center providers and office spaces alike.

We are therefore proud to present our **new** offering which addresses cable management and accessibility needs for clients with restrictive floor to ceiling heights. Starnet **PowerTraXX** - as low as 1 1/2", easy to install, fully modular electrical system. The solution is Starnet **PowerTraXX**.



# Where can Starnet Low-Profile System be used?

Complete flexibility, prefabricated, high strength and no adhesives or fasteners

Manufacturing & Assembly Areas  
 K-12 Schools  
 Universities  
 Casino  
**LIBRARIES**  
 APPLICATIONS ARE LIMITLESS  
 Conference Rooms  
 Class A Office Buildings  
 Courtrooms  
 Retail & Wholesale Stores  
 Displays/Exhibits  
 Training Facilities  
 STORAGE FACILITIES  
 911 CALL CENTERS



### PERFORMANCE DATA

- Concentrated Live Load - 2,000 lbf (8.90 kN) Per IBC Table 1607.1
- Concentrated Point Load - 500 lbf (2.22 kN)
- Uniform Live Load - 2,000 lbf (8.90 kN)
- Ultimate Load Safety Factor - 2-to-1 Min.
- Rolling Loads - 10 Pass  
 Cisca Wheel A (3" dia.) - 460 lb.  
 8" dia. x 2" Semi-Pneumatic - 500 lb.

### PHYSICAL DATA

- Weight of system 3.7 psf (18.1 kg/m<sup>2</sup>)
- Height of system - 1 1/2" (40 mm)  
 2" (50 mm)
- Fire rating of bare panel:  
 Class A Flame Spread  
 Non-Combustible Materials

### FEATURES

- Available at 1.5" FFH of 2" FFH
- Prefabricated before shipment
- Easy to install
- Heavy Duty quick-connect steel plates
- Easy to change layout and cable wiring
- No adhesive required
- No underlayment required
- No fasteners required

The ASM Starnet floor has the best "walk-ability" in its class. Its strength and flexibility provides a quiet and solid feel underfoot.

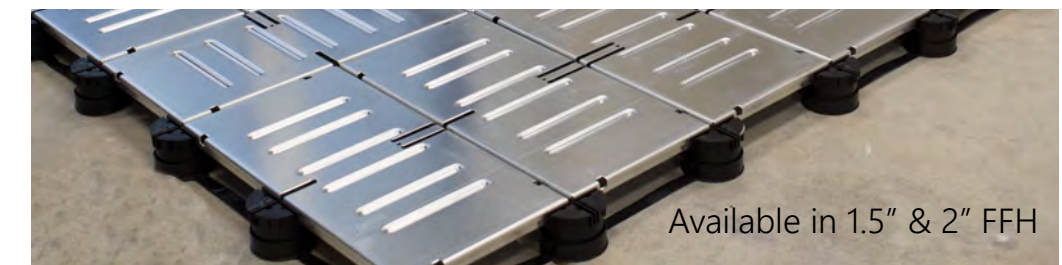
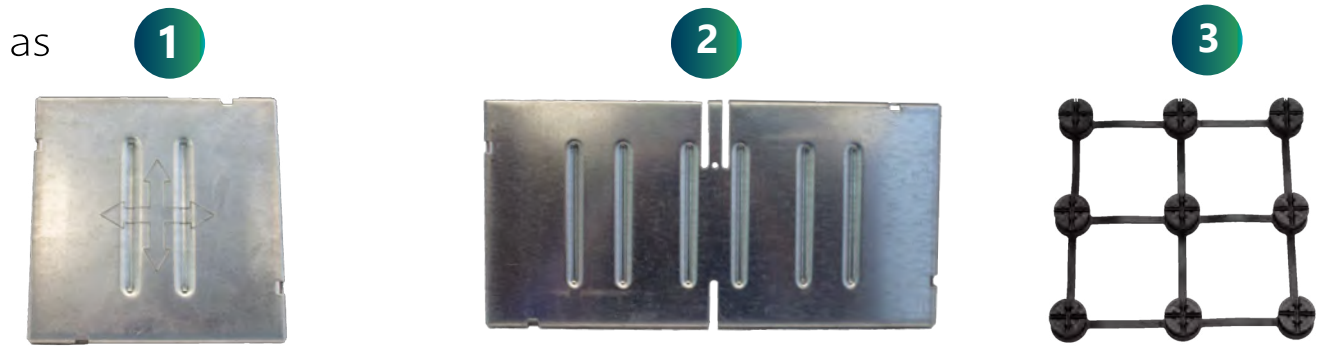
Super quiet!



Starnet is composed of a:

- Rectangular plate
- Square plate
- Resin base for 1.5" or 2" FFH (40mm & 50mm)

Easy as

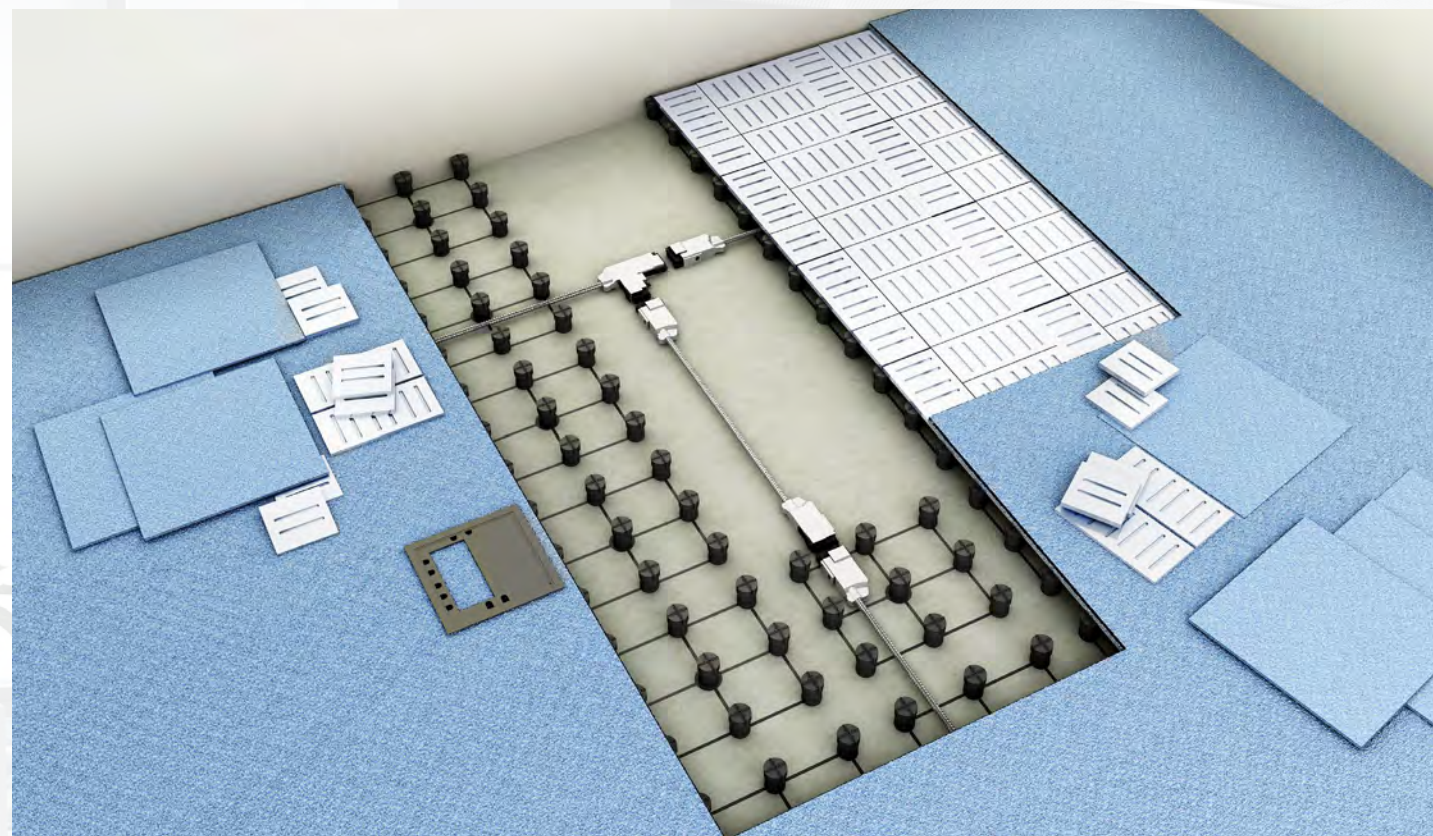


Available in 1.5" & 2" FFH

Introducing... PowerTra BOMGLIS EmPOWERing your business



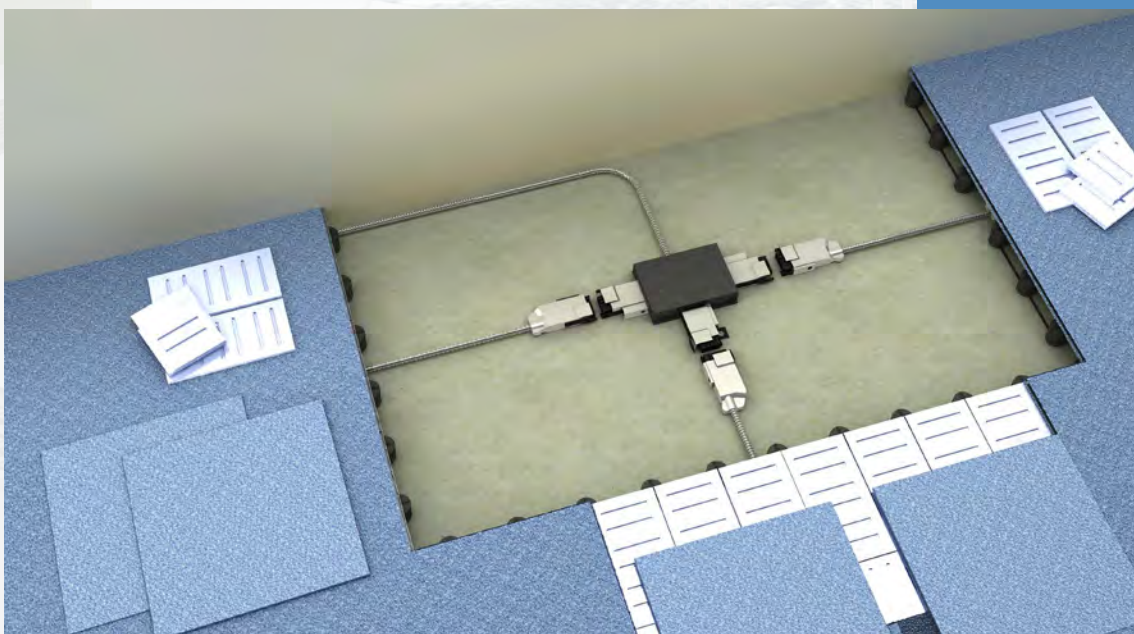
Homerun Cable to Electrical Panel - (3 circuits each)



Power to Systems Furniture

Flexibility

Wire Management



3 - Port Distribution Box

Single & Double Headed Extender Cable

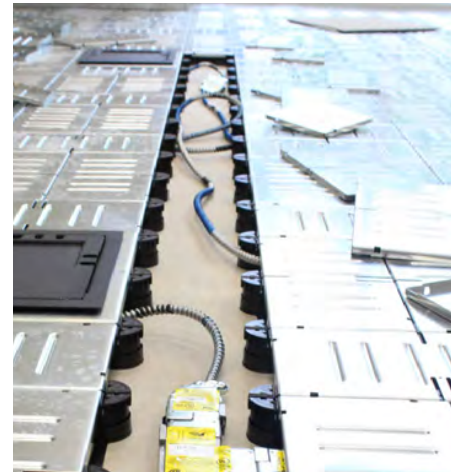
Plug - N - Play



Power to Slot Banks

# A fully flexible wire management system

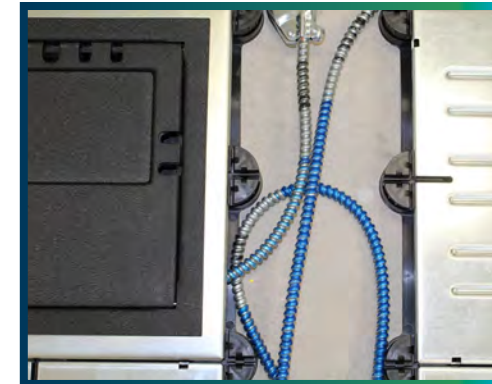
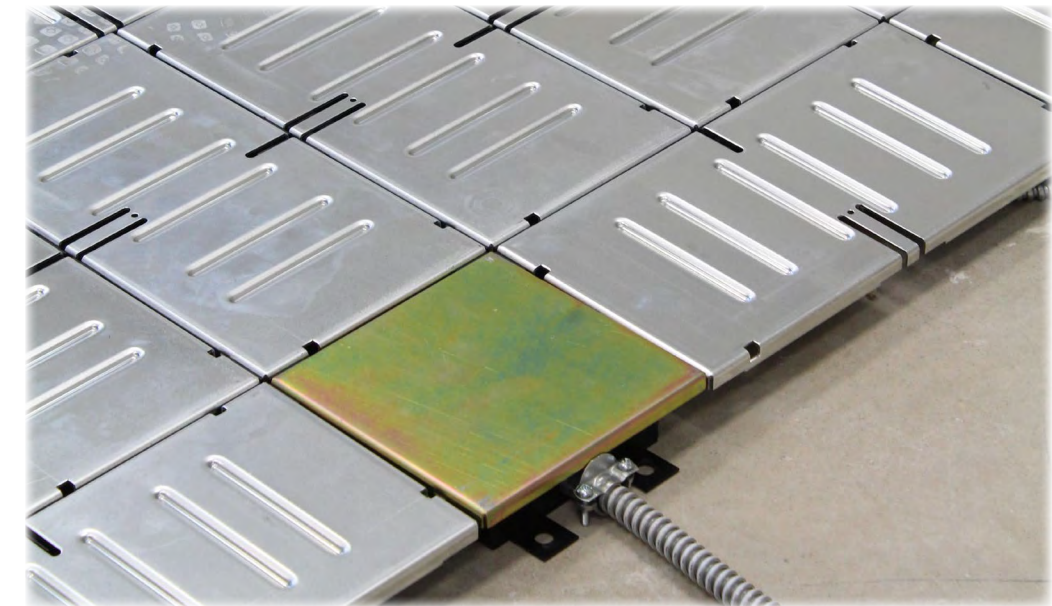
ASM's Starnet **PowerTraXX** plug-and-play modular electrical system is specifically designed for low height floors. **PowerTraXX** connects the service boxes in the general office layout to the electrical panel via a 3 port distribution box and extender cables. The extender cables have been engineered to be plugged and unplugged while "hot", allowing fast reconfiguration or modification to your floor plan. This provides the flexibility you need and the peace of mind that any future additions will be simple, non-disruptive and inexpensive.



Easy access power/voice & data box



Flush mounted power, voice & data boxes



**PHYSICAL DATA**

- Overall dimension - 11 1/2" x 11 1/2"
- Floor opening - 10" x 10"
- Height of box - Fits into ASM 1 1/2" FFH Low-Profile Floor System
- Load rating of lid - 1,000 lbf (4448 N)

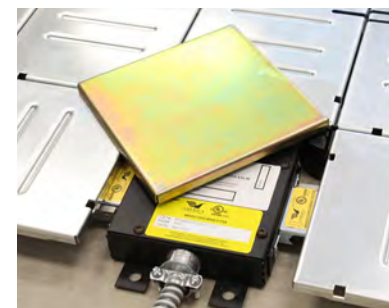
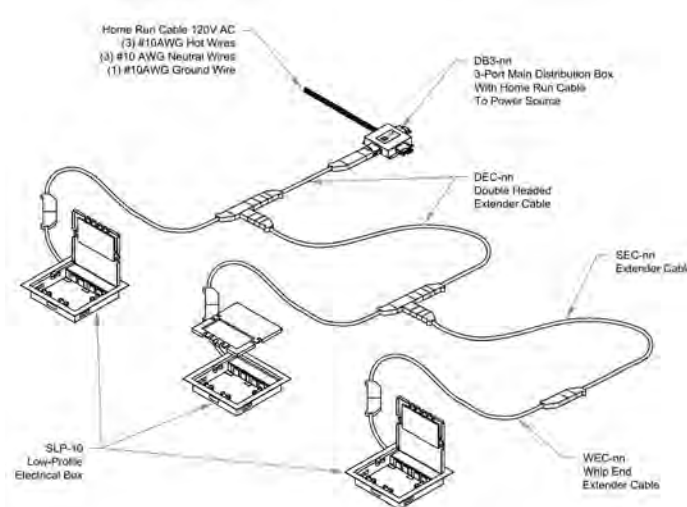
**ELECTRICAL DATA**

- 20amp/120V AC
- Extended cables provided in 5' increments
- Four simplex receptacles provided
- 3 wire 12 Ga extender cables
- 7 wire 10 Ga homerun cable
- Standard with 12" long Whip End Extender Cable

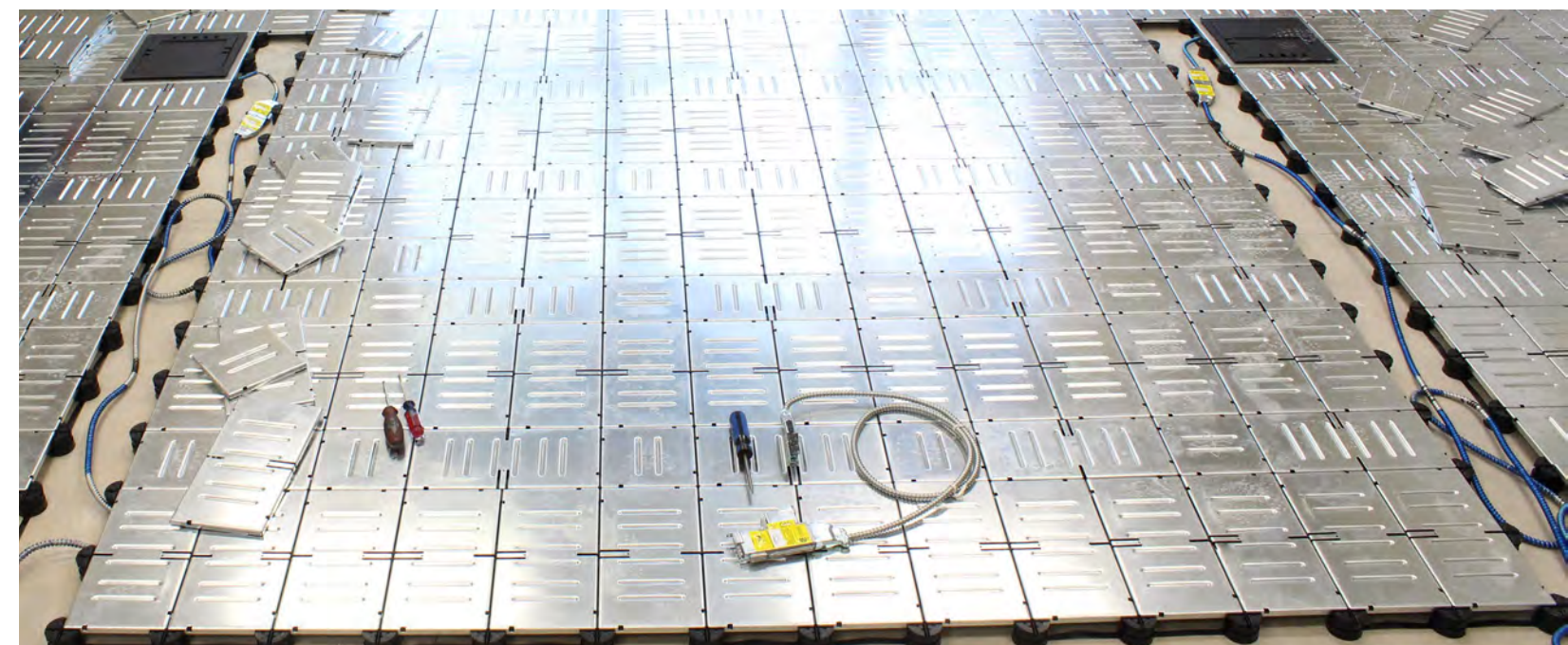
**FEATURES**

- Standard with four 20A simplex receptacles
- Lid hinges open or lifts off
- Recessed lid to accept carpet/tile insert
- Powder coat epoxy paint finish
- Welded heavy gauge steel construction
- 6 openings for Keystone jack couplers
- Lid can be closed when in use

**POWERS UP TO 9 BOXES**



Distribution box cover for easy identification



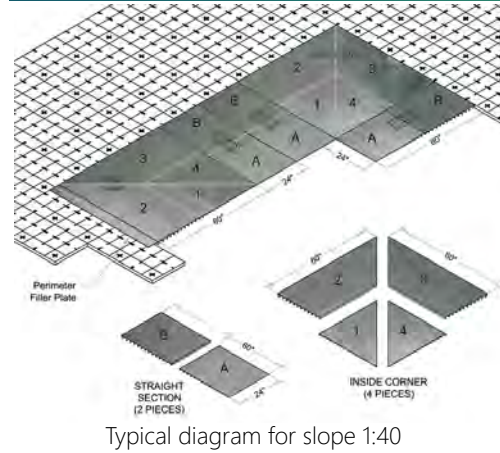
Smooth transition



Ramp components for 1:12, 1:20, or 1:40

- . Straight
- . Inside corner
- . Outside corner

Ramps, Threshold & Perimeter Plates



Installation

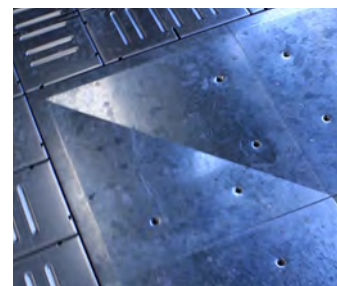


Easy to install  
No adhesives, underlayment,  
or fasteners required



Smooth and structurally sound transitions

SLP-40/50 Low-Profile System Inside Corner & Outside Corner



SLP-40/50 Low-Profile System Straight Ramp



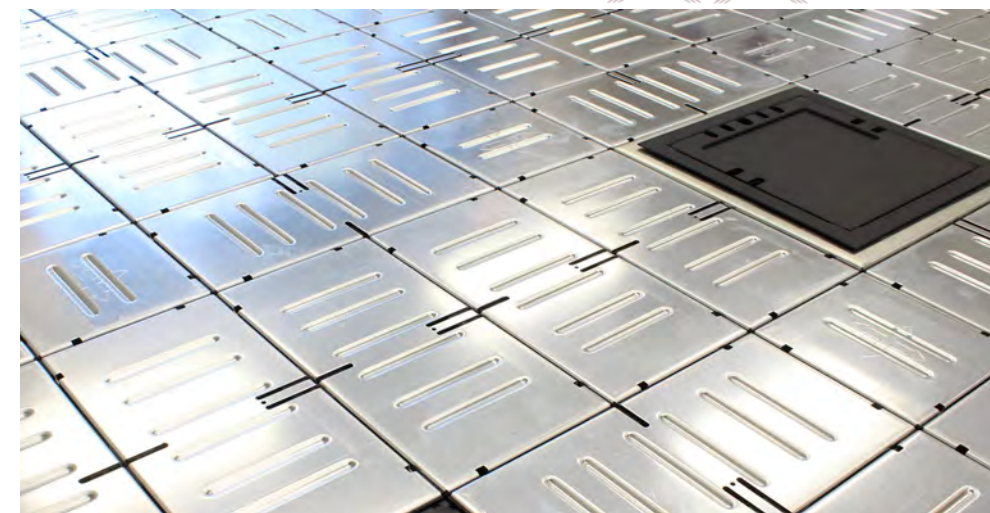
Extruded Aluminum Threshold/Fascia with Rubber Strip for doorways and open perimeters



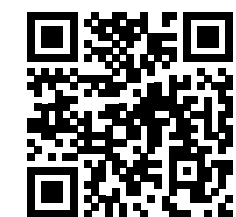
Galvanized Steel Filler Plate to be Cut-to-Fit at Perimeter Walls



PowerTra BOMERIS



Go to [www.starnetaccessfloor.com](http://www.starnetaccessfloor.com) to view our installation video or scan the QR code below.



Contact one of our Starnet **PowerTraXX** specialists:

---

Ph: 407-466-9987

Email: [Ed@selectprefabsolutions.com](mailto:Ed@selectprefabsolutions.com)

Websites: [www.selectprefabsolutions.com](http://www.selectprefabsolutions.com)

---

Location:

12201 Oyen Ct. Winter

Garden, FL 34787

